



HMI[®]

Creating scenes with intensity and brightness

osram.com/entertainment

amun OSRAM

HMI® lamps are the first choice for users in the film and TV industry.

Almost 60 years ago, film and television producers turned to OSRAM, seeking an economical and efficient alternative to incandescent lights. From this request, the HMI® lamp was born. The HMI® technology has since received multiple prestigious awards – such as the OSCAR®, the Primetime Emmy® Engineering Award and the PLASA Innovation Award. As a result, the HMI® lamp family continues to be an integral part of film sets around the world. Thanks to their continuous improvement, HMI® lamps have made film history again and again – many film productions would not be possible with the outstanding light of our HMI® lamps. Our powerful and effective HMI® series will benefit the entertainment industry at every level, from professional film productions to small theatrical events.

Typical applications

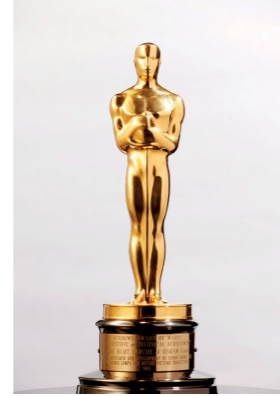
- Film, TV and video productions
- Stage lighting (theater, opera etc.)
- Lighting for major events
- Professional photography

Other applications

- Trade shows or exhibitions of autos, boats, industrial equipment, and motorcycles
- Industrial solar simulation

Typical luminaires

- Follow lights
- Fresnel luminaires
- PAR/open luminaires
- Soft and flood lighting



HMI® lamps for film and television were awarded in Hollywood an OSCAR® in 1987.



Acknowledging its outstanding performance and continuous improvement in technology for the TV industry, HMI® was awarded the Primetime Emmy® Engineering Award by the Academy of Television Arts & Sciences.



HMI® – all action and no drama

HMI® lamps are AC-operated metal halide discharge lamps, which have excellent color rendering and photometric integrity throughout their life.

Perfect light whatever the time – day or night. With an extremely bright light, providing up to 100 lumens per watt, HMI® lamps generate a color temperature that closely matches sunlight. It reveals true colors and facilitates daytime filming outdoors. HMI® lamps from ams OSRAM are up to five times more efficient than an incandescent light.

Key features and benefits

- High intensity light simulates daylight color temperature of 6000 K with a CRI >90
- Incredibly bright with luminous flux up to 2.3 million lm
- Very high luminous efficacy of up to 100 lm/W
- Reduced UV emissions with UV-Stop (UVS) feature on selected HMI single-end lamps
- Stronger and longer life with multiple moly-foils in seal design
- Mechanically robust
- Extreme Seal (XS) technology allows up to 450°C at the pinch seal
- Capable of hot restrike ignition



HMI® 18000 W/SE/GX51 in action.



HMI® product overview

	Single-ended	Double-ended	Color Temperature ¹⁾	with UVS
HMI® DIGITAL	yes	no	6600 K	200 - 18000 W
HMI® standard lamps	no	yes	6600 K	no



HMI® packaging: Color coded for easy identification

1) Average value on electronic ballast

Robust, flicker-free lamps deliver a steady performance: HMI® DIGITAL

Applications

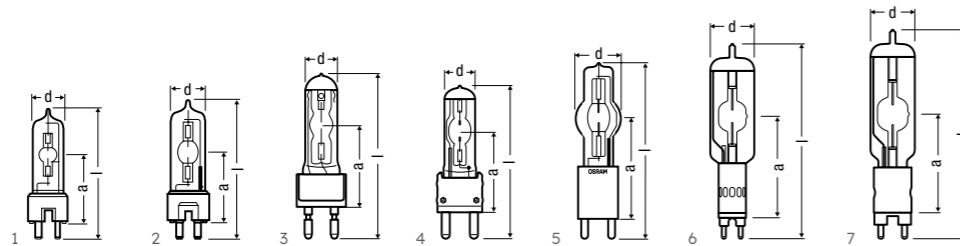
Whether using analog or digital film, shooting in in modes of 1000 Hz and higher, our HMI® DIGITAL line has a lamp for your production. While specially-designed to accommodate evolving, high-speed film technology, HMI® DIGITAL still provides every feature needed to light traditional film productions, as well as theater stages.

Expect high-performance for the high demands on your:

- Film sets
- Television studios
- Theater stages

Benefits & features at a glance

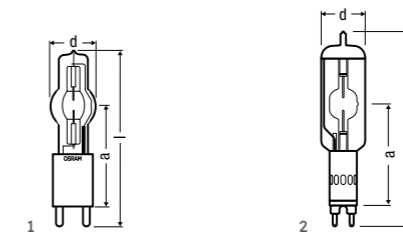
- Flicker-free when used with high-speed electronic ballasts (1000 Hz and higher)
- Suited for both analog and digital film production
- Up to 99.9% less UV emissions (from models equipped with UV-Stop)
- Color temperature of 6000 K for realistic, naturally-lit scenes
- High color rendering index of 90+, exposing true-to-life colors
- Extremely bright light of up to 100 lumens/watt
- Hot restart capability
- Improved stability and design
- Robust stems, resulting in less breakage during transport
- Round moly-foil construction that evenly distributes heat and current, thus extending lamp life
- Splash-proof carrying case is reusable and allows lamps to be transported safely



HMI® DIGITAL lamp types

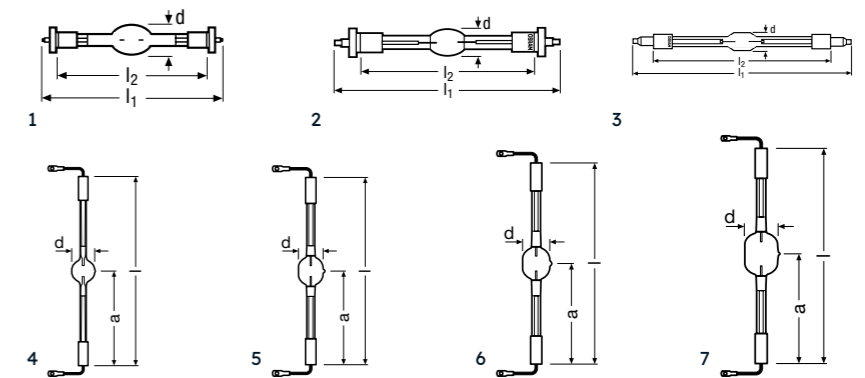
Product reference	Product number	W	V	A		lm	t [h]	K		LCL \bar{a} [mm]	I [mm]	
HMI® DIGITAL 200W	4052899984110	200	69	2.9	GZY9.5	16000	200	6900 ¹⁾	19	39	80	1
HMI® DIGITAL 400W	4052899984127	400	75	5.3	GZY9.5	32500	650	6700 ¹⁾	23	60	110	2
HMI® DIGITAL 575W	4052899984134	575	94	6.1	G22	49000	1000	6400 ¹⁾	30	70	145	3
HMI® DIGITAL 800W	4052899984141	800	95	8.4	G22	69000	1000	6300 ¹⁾	30	70	145	3
HMI® DIGITAL 1200W	4052899984196	1200	100	12	G38	110000	1000	6800 ¹⁾	40	107	200	4
HMI® DIGITAL 1600W	4062172294911	1600	155	10.3	G22	144000	750	7250 ¹⁾	40	85	173	3
HMI® DIGITAL 1800W	4052899984202	1800	140	12.9	G38	165000	750	6500 ¹⁾	40	107	200	4
HMI® DIGITAL 2500W	4052899984295	2500	118	24.5	G38	220000	500	6300 ¹⁾	60.9	127	225	5
HMI® DIGITAL 4000W	4052899984301	4000	200	24	G38	387000	500	6000 ¹⁾	75	141	250	5
HMI® DIGITAL 6000W	4062172005890	6000	123	55	GX38	600000	500	6000 ¹⁾	74	210	360	6
HMI® DIGITAL 9000W	4062172001908	9000	165	56	GX38	875000	400	6000 ¹⁾	80	210	380	6
HMI® DIGITAL 18000W	4062172123372	18000	225	88	GX51	1600000	300	6000 ¹⁾	100	260	495	7

1) Average value on electronic ballast



HMI®, single-ended

Product reference	Product number	W	V	A	t [h]	lm	K		I [mm]	LCL \bar{a} [mm]		No.	
HMI® 2500 W/SE/XS	4050300284293	2500	115	25.6	500	240000	6000	60	225	127	Any	G38	1
HMI® 4000 W/SE/XS	4008321244314	4000	200	24	500	380000	6000	75	250	141	Any	GX38	1
HMI® 12000 W/SE/XS	4050300650418	12000	160	84	500	1150000	6000	100	455	260	Other	GX38	1



HMI®, double-ended

Product reference	Product number	W	V	A	t [h]	lm	K		I [mm]	H max. [mm]		No.	
HMI® 575 W/DXS	4008321285102	575	95	7	1000	49000	6000	21	135	115	Any	SFc10-4	1
HMI® 1200 W/DXS	4008321931153	1200	100	13.8	1000	110000	6000	27	220	180	Any	SFc15.5	1
HMI® 2500 W/S XS	4050300025780	2500	115	25.6	500	240000	6000	31.5	210	150	Other	SFa21-12	1
HMI® 2500 W/DXS	4008321182197	2500	115	25.6	500	240000	6000	31.5	355	290	Other	SFa21	1
HMI® 4000 W/DXS	4008321210203	4000	200	24	500	380000	6000	36	405	340	p15	SFa21	1
HMI® 4000 W/DXS SOLAR	4052899152601	4000	201	24	500	395000	7000	36	405	340	p15	SFa21-12	1
HMI® 6000 W/DXS	4008321210210	6000	122	55	500	570000	6000	54	450	-	p15	S25.5	1
HMI® 12000 W/DXS	4008321210227	12000	240	84	500	1150000	6000	64	470	-	p15	S30	1
HMI® 18000 W/DXS	4008321370280	18000	380	79	500	1700000	6000	70	500	-	p15	S30	1
HMI® 24000 W/DXS	4008321355805	24000	280	86	500	2300000	6000	83	1000	-	p15	S30	1

ams OSRAM Group
ams-osram.com

OSRAM GmbH
Marcel-Breuer-Strasse 4
80807 Munich, Germany
Phone +49 89-6213-0
Fax +49 89-6213-2020
www.osram.com

